



TREE PLANTING PROGRAM 2024

The Department of Youth, Recreation & Parks is accepting orders for its 2024 Fall Planting Program starting September 9. Deadline to order is October 11. Details about the variety of bare root trees offered can be found below.

COST of each tree is \$85.00. (City absorbs the remainder of the cost).

Street Trees

You pick the site, between the street and sidewalk of your property. Each planting site must be approved by a Parks Division staff prior to planting.

Park Trees

You can choose specific trees to plant in earmarked park locations with our “PlANT it Forward” program. A select few park sites are chosen each year. Pick the tree and park from the available options, we’ll plant the tree and send you the location along with a “I planted a tree in NT” tee shirt. For memorial trees, specific **approved tree plaques** can be purchased separately and placed on location once the tree is planted. This year we have a selection of Evergreen Trees. Due to the increased cost of this selection these specific trees will be \$100/tree (city absorbs the remainder of cost)

What you need to know...

The City will plant bare-root trees (1.5” DBH) in the late fall/early winter when the plants are dormant and the ground isn’t frozen. This gives the tree a chance to put out new roots before they have to cope with the hot sun, drying winds and added stress of producing leaves. You order the tree, we do the rest!

****Since we do not receive any guarantee from the nursery, we are unable to replace any street tree that does not bud****

Review the trees from the selection on the following pages. Note the acceptable planting sites (If you have powerlines over your side of the street, DO NOT select a tree from the NO overhead wires section. For suitable planting locations refer to the Tree Planting Index on Page 25.

Street Trees-- Large (approved for locations with NO overhead wires)

- [Spaeth's Alder](#) (*Alnus x Spaethii*) pg 3
- [Cumulus Service Berry](#) (*Amelanchier laevis* 'Cumulus') pg 3
- [American Hornbeam](#) (*Carpinus caroliniana*) pg 4
- [Northern Catalpa](#) (*Catalpa speciosa*) pg 4
- [Hackberry](#) (*Celtis occidentalis*) pg 5
- [Turkish Filbert](#) (*Corylus colurna*) pg 5
- [Honeylocust Street Keeper](#) (*Gleditsia triacanthos inermis*) pg 6
- [Kentucky Coffeetree](#) (*Gymnocladus dioicus*) pg 6
- [Red Oak](#) (*Quercus rubra*) pg 7
- [American Sentry Linden](#) (*Tilia americana* 'American Sentry') pg 7
- [Musashino Zelkova](#) (*Zelkova serrata* 'Musashino') pg 8

Street Trees- Small (approved for under wires)

- [Autumn Brilliance Service Berry](#) (*Amelanchier grandiflora*) pg 8
- [Eastern Red Bud](#) (*Cercis Canadensis*) pg 9
- [Winter King Hawthorn](#) (*Crataegus viridis* 'Winter King') pg 9
- [Thornless Cockspur Hawthorn](#) (*Crataegus crusgalli inermis*) pg 10
- [Ironwood](#) (*Ostrya virginiana*) pg 10
- [Pink Flair Sargent Cherry](#) (*Prunus sargentii* 'Pink Flair') pg 11
- [Japanese Tree Lilac](#) (*Syringa reticulata*) pg 11

Park Trees (approved for park locations only as indicated below)

All the trees above are suitable for certain park plantings as part of the PlaNT it Forward Program. Additionally, the trees below are suitable for Park plantings only. For an index of what parks are suitable planting locations for each specific tree, check out our [Tree Planting Index on page 25](#) of the guide.

- [American Beach](#) (*Fagus grandifolia*) pg 12
- [Black Walnut](#) (*Juglans nigra*) pg 12
- *[Norway Spruce](#) (*Picea abies*) pg 13
- *[Eastern White Pine](#) (*Pinus strobus*) pg 13
- [Quaking Aspen](#) (*Populus tremuloides*) pg 14
- [Northern Pin Oak](#) (*Quercus Ellipsoidalis*) pg 14
- [Chestnut Oak](#) (*Quercus prinus*) pg 15

*Evergreen trees (\$100/tree) park locations only

***Alnus x Spaethii* (Spaeths Alder)**

50' height x 20' spread

Good tree for streets and parks. Tolerates most soils, wind salt and pollution. Leaves are copper purple in spring, green in summer.



***Amelanchier laevis* 'Cumulus' (Cumulus Service Berry)**

25' height x 15' spread

Good street tree with upright open form. Minimal suckering. White spring flowers and dark green summer foliage. Radiant fall colors of golden-orange to deep dark maroon. White flowers produce flavorful purple blackberries.



***Carpinus carolinana* (American Hornbeam)**

30' height x 25' spread

Good residential street tree. Tolerates shade. Has gray colored, muscle-like branches, and trunk. Flowers appear in spring in separate male and female catkins, with the female catkins giving way to distinctive clusters of winged nutlets. Serrated, elliptic-oval, dark green leaves often produce respectable shades of yellow, orange and red in fall.



***Catalpa speciosa* (Northern Catalpa)**

60' height x 30' spread

This tree produces white flowers that have bright yellow stamen and purple patterns on the inside of the flower. They flower in late spring to early summer. The foliage is noted to be very large and it produces long, showy, green seed pods that have a bean-like capsule. They do well in difficult to grow locations of the landscape, such as moist low spots or dry spots with poor soils tolerating wet, dry and alkaline soil conditions.



Celtis occidentalis (Hackberry)

60' Height x 40' Spread

Good street tree. Adapts to difficult urban conditions. This tree grows at a medium to fast rate, with height increases of anywhere from 13" to more than 24" per year. Requires at least 6 hours of full direct sunlight per day. Produces small, dark red drupes about 1/3" in diameter that turn dark purple as they mature in mid-autumn. These berry-like fruit persist into the winter. The fruit of the hackberry is popular with winter birds, especially the cedar waxwing, mockingbird and robin. The tree also attracts many butterfly species including American snout, hackberry, mourning cloak, and tawny emperor.



Corylus colurna (Turkish Filbert)

50' height x 30' spread

Excellent hardy tree for lawns, street plantings, and urban conditions. Heavy textured, dark green foliage is free of insects and disease. This tree is also pH adaptable and tolerant of heat, cold, and drought once it is established. Yields attractive male catkins in early spring and striking beaked fruits.



[Gleditsia triacanthos inermis \(Honeylocust 'Street Keeper'\)](#)

45' height x 20' spread

An ideal tree for city streets, this cultivar boasts the tight, narrow form that has long been lacking in urban tolerant honeylocust. The ascending branch structure gives Street Keeper® a canopy that is only half as wide as other cultivars. Foliage is deeper green than other selections. Fall foliage turns an outstanding gold and will require no raking because of their small leaf size. Their rapid growth rate and extreme toughness make this tree a sure bet.



[Gymnocladus dioicus \(Kentucky Coffee Tree\)](#)

45' height x 35' spread

Good street tree with coarse picturesque texture in the winter. This tree bears leathery, reddish-brown seed pods. Tolerates all types of soil (including wet sites).



***Quercus rubra* (Red Oak)**

75' height x 60' spread

Dark, lustrous green leaves (grayish-white beneath) with 7-11, toothed lobes which are sharply pointed at the tips. Leaves turn brownish-red in autumn. Insignificant flowers in separate male and female catkins appear in spring. Fruits are acorns (with flat, saucer-shaped cups) which mature in early fall. An abundant crop of acorns may not occur before this tree reaches 40 years old.



***Tilia americana* 'American Sentry' (American Sentry Linden)**

45' height x 25' spread

Dense shade tree with heart-shaped leaves and fragrant flowers blooming in late June. The bark is smooth and distinctively gray when young. The heart-shaped, green leaves are toothed and have a whitish color on the underside that turns yellow in the fall.



Zelkova serrata 'Musashino' (Musashino Zelkova)

45' height x 20' spread

Good urban street tree for restricted areas. Dark green foliage. Autumn brings an array of tones, from yellow to rusty red-orange. The tree's small leaf size greatly reduces the need for raking and other fall cleanup. Excels in tough urban conditions. Fast growing, needs full sunlight.

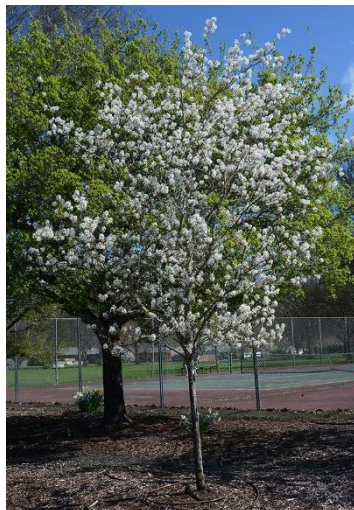


(Small trees: Planting under wires)

Amelanchier grandiflora (Autumn Brilliance Serviceberry)

20' height x 15' spread

Good street or lawn tree. White flowers bloom in April followed by edible fruits (3/8" diameter) in June. Berries resemble blueberries in taste and may be used in jams, jellies and pies. Finely-toothed leaves emerge with bronze tints in spring, mature to dark green from late spring throughout summer before finally turning brilliant red to orange-red in fall.



Cercis Canadensis (Eastern Red Bud)

25' height x 30' spread

Blooms in a profusion of rosy pink flowers in April. Features heart-shaped leaves that emerge a reddish color, turning dark green as summer approaches and then yellow in the fall. Makes a bold landscape statement, with its irregular branching and graceful crown



Crataegus viridis 'Winter King'(Winter King Hawthorn)

20' height x 25' spread

Good street tree. Tolerates light, shade, drought and urban pollution. White flowers with attractive orange-red persistent fruit. Few twig thorns present. Fragrant, 5-petaled, white flowers in 2-inch clusters (corymbs) bloom in May. Flowers are followed by small red fruits (pomes) that ripen in September and usually persist on the tree well into winter. Bark on mature trunks exfoliates to reveal orange inner bark.



***Crataegus crusgalli inermis* (Thornless Cockspur Hawthorn)**

25' height x 30' spread

Obovate to oblong-obovate dark green leaves (to 3" long) have wedge-shaped bases. Foliage turns orange to scarlet to purple red in fall. White flowers (in corymbs to 3") bloom in May for a period of 7-10 days. Flowers are followed by rounded fruits (3/8" diameter) that ripen to deep red in fall (September-October) and typically persist into late fall.



***Ostrya virginiana* (Ironwood aka American Hophornbeam)**

30' height x 20' spread

Features birch-like, oval to lance-shaped, sharply-serrated, dark yellowish-green leaves. Leaves turn an undistinguished yellow in autumn and often drop early. Attractive hop-like fruits.



[Prunus sargentii 'Pink Flair' \(Pink Flair Sargent Cherry\)](#)

25' Height x 15' Spread

Well suited for urban landscapes. Fall color is consistently bright, and its upright symmetry gives winter appeal. Springtime brings clusters of fragrant, single pink blooms. Proven to be the hardiest of the flowering cherries. Fall color is consistently bright orange-red, and its handsome bark and upright symmetrical form provide year-long appeal.



[Syringa reticulata \(Japanese Tree Lilac\)](#)

25'x20'

White flowers in late spring and cherry-like bark. Good street tree. Easily grown in average, medium moisture, well-drained soil in full sun. Tolerates light shade, but best bloom occurs in full sun. Showy, fragrant, creamy white flowers bloom in upright panicles to 12" long in late spring to early summer (later than most other lilac species). Flowers give way to loose clusters of brown capsules that persist into winter. Reddish-brown peeling bark is attractive on younger branches, gradually turning gray with age. Sharply-tipped, lanceolate to ovate, dark green leaves (to 6" long). No fall color.



(Park Tree Only: Not available for street tree planting)

Fagus grandifolia (American Beech)

70' height x 60' spread

Trunks have distinctive thin, smooth, gray bark. Ovate to elliptic dark green leaves. Foliage turns golden bronze in fall. Monoecious yellowish green flowers bloom in April-May, the male flowers in drooping, long-stemmed, globular clusters and the female flowers in short spikes. Female flowers give way to triangular nuts enclosed by spiny bracts. Beechnuts ripen in fall and are edible.



Juglans nigra (Black Walnut)

50' height x 45' spread

It is intolerant of shade. This massive tree with a 50 to 90 foot height and a 3 to 6 foot diameter trunk when mature. It has an upright spreading open form, with an ovoid crown and a tall trunk



Picea Abies (Norway Spruce)

100' height x 40' spread

Evergreen that has pendulous branching giving grace to form. Fast growing, sensitive to high winds.



Pinus Strobus (White Pine)

100' height x 50' spread

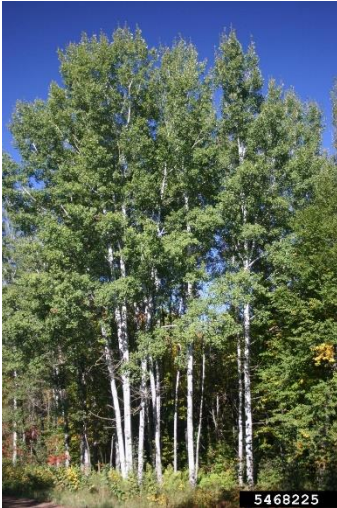
The Eastern white pine is a tree for landscapes with ample space. Its fine feathery needles, open canopy, and straight trunk get more picturesque with age. Trees are fast-growing and long-lived This evergreen is sensitive to wind, salt and air pollutants.



Populus tremuloides (Quaking Aspen)

40' Height x 20' Spread

Native tree that tolerates a variety of soil types. Leaves flutter in slight breeze and turn an attractive yellow in the fall. Smooth, whitish-green bark becomes furrowed at the trunk's base with age. Silvery catkins appear before leaves. Female flowers give way to small drooping fruit clusters



Quercus Ellipsoidalis (Northern Pin Oak)

60' height x 50' spread

Glossy green summer foliage turn red in fall. Male and female flowers develop as drooping catkins, with female flowers developing into acorns about ½" long. Bark is dark gray and smooth-ish, with deep ridges on older branches. Tolerates alkine ph soils. Tolerant to drought; intolerant of flooding



Quercus prinus (Chestnut Oak)

60' height x 60' spread

Rounded crown and distinct tight ridges on mature bark. The coarsely toothed foliage with paler undersides turn yellow brown in fall. Acorns have warty cups that cover half the nut. Best grown in full sun and rich well-drained acidic soils. Drought tolerant.



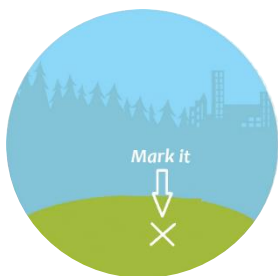
Order your tree online
@ www.ntparksrec.com

ORDERING A STREET TREE

In late October we will call &
confirm location with instructions



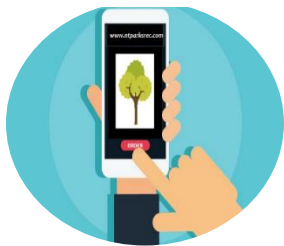
You mark the tree
location.



We plant & stake the tree.



You water & care for it!



ORDERING A PARK TREE (*PlaNT It Forward Program*)

You choose the pre-approved
park/public space to plant



We plant & stake the tree.



We'll send you a picture of the location
and a PlaNT it Forward tee-shirt



Questions?
NT Parks & Recreation
695-8520
ntparksrec@northtonawanda.org

Gratwick Riverside Park



PINEWOODS PARK



Wurlitzer Park



Leah Park



Mayor's Park



Raymond Klimek Veterans Park



Heritage Park



Cramer Park



Tree Planting Index

View the chart below to reference a specific tree and determine its suitable planting locations. Y= Yes N= No

Common Name	Scientific Name	Street Tree	Under Wires	Cramer	Gratwick	Heritage	Leah	Mayors	Pinewoods	RK Vets	Wurlitzer
Spaeth's Alder	<i>Alnus x Spaethii</i>	Yes	No	Y	Y	Y	Y	Y	N	Y	Y
Autumn Brilliance Serviceberry	<i>Amelanchier grandiflora</i>	Yes	Yes	Y	Y	Y	Y	Y	N	Y	Y
Cumulus Serviceberry	<i>Amelanchier laevis 'Cumulus'</i>	Yes	No	Y	Y	Y	Y	Y	N	Y	Y
American Hornbeam	<i>Carpinus caroliniana</i>	Yes	No	Y	Y	Y	Y	Y	Y	Y	Y
Northern Catalpa	<i>Catalpa speciosa</i>	Yes	No	Y	Y	Y	Y	Y	Y	Y	Y
Hackberry	<i>Celtis occidentalis</i>	Yes	No	Y	Y	Y	Y	Y	N	Y	Y
Eastern Redbud	<i>Cercis canadensis</i>	Yes	Yes	Y	N	Y	N	N	Y	Y	Y
Turkish Filbert	<i>Corylus colurna</i>	Yes	No	Y	Y	Y	Y	Y	N	Y	Y
Winter King Hawthorn	<i>Crataegus viridis 'Winter King'</i>	Yes	Yes	Y	N	Y	Y	N	N	N	Y
Thornless Cockspur Hawthorn	<i>Crataegus crusgalli inermis</i>	Yes	Yes	Y	N	Y	Y	N	N	N	Y
American Beech	<i>Fagus grandifolia</i>	No	No	Y	Y	N	Y	Y	N	Y	Y
Honeylocust Street Keeper	<i>Gleditsia triacanthos inermis "Street Keeper"</i>	Yes	No	Y	Y	Y	Y	Y	N	Y	Y
Kentucky Coffeetree	<i>Gymnocladus dioicus</i>	Yes	No	Y	N	Y	Y	N	Y	Y	Y
Black Walnut	<i>Juglans nigra</i>	No	No	Y	N	Y	Y	N	N	Y	Y
Ironwood (Hophornbeam)	<i>Ostrya virginiana</i>	Yes	Yes	Y	N	Y	Y	Y	N	N	Y
Norway Spruce	<i>Picea Abies</i>	No	No	Y	N	Y	Y	N	Y	Y	Y
Eastern White Pine	<i>Pinus strobus</i>	No	No	Y	N	Y	Y	N	Y	N	Y
Quaking Aspen	<i>Populus tremuloides</i>	No	No	Y	Y	Y	Y	Y	N	Y	Y
Pink Flair Sargent Cherry	<i>Prunus sargentii 'Pink Flair'</i>	Yes	Yes	Y	N	Y	Y	N	Y	N	Y
Northern Pin Oak	<i>Quercus Ellipsoidalis</i>	No	No	N	Y	N	N	N	Y	N	Y
Chestnut Oak	<i>Quercus prinus</i>	No	No	Y	Y	N	Y	Y	Y	Y	Y
Red Oak	<i>Quercus rubra</i>	Yes	No	Y	Y	N	Y	Y	Y	Y	Y
Japanese Tree Lilac	<i>Syringa reticulata</i>	Yes	Yes	Y	N	Y	Y	N	N	N	Y
American Sentry Linden	<i>Tilia americana 'American Sentry'</i>	Yes	No	Y	Y	Y	Y	Y	Y	Y	Y
Musashino Zelkova	<i>Zelkova serrata 'Musashino'</i>	Yes	No	Y	Y	Y	Y	Y	N	Y	Y