



## TREE PLANTING PROGRAM 2023

The Department of Youth, Recreation & Parks is accepting orders for its 2023 Fall Planting Program starting September 11. Deadline to order is October 9. Details about the variety of bare root trees offered can be found below.

COST of each tree is \$80.00. (City absorbs the remainder of the cost).

### Street Trees

You pick the site, between the street and sidewalk of your property. Each planting site must be approved by a Parks Division staff prior to planting.


### Park Trees

You can choose specific trees to plant in earmarked park locations with our “PlANT it Forward” program. A select few park sites are chosen each year. Pick the tree and park from the available options, we’ll plant the tree and send you the location along with a “I planted a tree in NT” tee shirt. For memorial trees, specific **approved tree plaques** can be purchased separately and placed on location once the tree is planted.

New this year is a selection of Evergreen Trees. Due to the increased cost of this selection these specific trees will be \$100/tree (city absorbs the remainder of cost)

### What you need to know...

The City will plant bare-root trees in the late fall/early winter when the plants are dormant and the ground isn’t frozen. This gives the tree a chance to put out new roots before they have to cope with the hot sun, drying winds and added stress of producing leaves. You order the tree, we do the rest!

***Review the trees from the selection on the following pages. Note the acceptable planting sites (if you have powerlines over your side of the street, DO NOT select a tree with a  (overhead wires) indication.***

## Street Trees--Small (approved for under wires)

- [Autumn Brilliance Service Berry](#) (*Amelanchier grandiflora*) pg 7
- [Cornelian Cherry](#) (*Cornus mas*) pg 8
- [Winter King Hawthorn](#) (*Crataegus viridis* 'Winter King') pg 8
- [Spring Wonder Sargent Cherry](#) (*Prunus sargentii* 'Hokkaido Normandale') pg 9
- [Japanese Tree Lilac](#) (*Syringa reticulata*) pg 9

## Street Trees- Large (approved for locations with NO overhead wires)

- [American Hornbeam](#) (*Carpinus caroliniana*) pg 3
- [Northern Catalpa](#) (*Catalpa speciosa*) pg 3
- [Hackberry](#) (*Celtis occidentalis*) pg 4
- [Yellowwood](#) (*Cladrastis kentuckea*) pg4
- [Kentucky Coffeetree](#) (*Gymnocladus dioicus*) pg 5
- [Worplesdon Sweetgum](#) (*Liquidambar styraciflua* 'Worplesdon') pg 5
- [Sawtooth Oak](#) (*Quercus acutissima*) pg 6
- [Purple Robe Black Locust](#) (*Robinia pseudo* 'Purple Robe') pg 6
- [Musashino Zelkova](#) (*Zelkova serrata* 'Musashino') pg 7

## Park Trees (approved for park locations as indicated below)

- [Autumn Brilliance Service Berry](#) (*Amelanchier grandiflora*) Parks: Gratwick, Leah, Wurlitzer, Mayors Park
- [American Hornbeam](#) (*Carpinus caroliniana*)- Parks: Leah, Pinewoods, Wurlitzer
- [Northern Catalpa](#) (*Catalpa speciosa*) Parks: Gratwick, Leah, Pinewoods, Wurlitzer, Mayors, Sweeney Bike Path
- [Hackberry](#) (*Celtis occidentalis*) Parks : Gratwick, Leah, Wurlitzer, Sweeney Bike Path
- [Cornelian Cherry](#) (*Cornus mas*) Parks: Leah, Pinewoods, Wurlitzer
- [Yellowwood](#) (*Cladrastis kentuckea*) Parks: Leah, Wurlitzer
- [Winter King Hawthorn](#) (*Crataegus viridis* 'Winter King') Parks: Leah, Wurlitzer
- [Kentucky Coffeetree](#) (*Gymnocladus dioicus*) Parks: Leah, Pinewoods, Wurlitzer,
- [Worplesdon Sweetgum](#) (*Liquidambar styraciflua* 'Worplesdon') Parks: Gratwick, Leah, Wurlitzer
- [Quaking Aspen](#) (*Populus tremuloides*) pg 10 Parks: Gratwick, Leah, Mayors
- [Sycamore](#) (*Platanus occidentalis*) pg 10 Parks: Gratwick, Leah, Mayors
- [Spring Wonder Sargent Cherry](#) (*Prunus sargentii*) Parks: Leah, Pinewoods, Wurlitzer, Sweeney Bike Path
- [Sawtooth Oak](#) (*Quercus acutissima*) Parks: Gratwick, Leah, Wurlitzer
- [Purple Robe Black Locust](#) (*Robinia pseudo* 'Purple Robe') Parks: Gratwick, Leah, Wurlitzer, Sweeney Bike Path
- [Japanese Tree Lilac](#) (*Syringa reticulata*) Parks: Leah, Wurlitzer
- [Musashino Zelkova](#) (*Zelkova serrata* 'Musashino') Parks: Gratwick, Leah, Mayors

- \*[White Fir](#) (*Abies concolor*) pg 11 Parks: Gratwick, Leah, Pinewoods
- \*[Norway Spruce](#) (*Picea Abies*) pg 11 Parks: Leah, Pinewoods
- \*[White Spruce](#) (*Picea glauca*) pg 12 Parks: Gratwick, Leah, Pinewoods
- \*[White Pine](#) (*Pinus Strobus*) pg 12 Parks: Leah, Pinewoods

\*Evergreen trees (\$100/tree) park locations only

***Carpinus caroliniana* (American Hornbeam)**

30' height x 25' spread

Good residential street tree. Tolerates shade. Has gray colored, muscle-like branches, and trunk. Flowers appear in spring in separate male and female catkins, with the female catkins giving way to distinctive clusters of winged nutlets. Serrated, elliptic-oval, dark green leaves often produce respectable shades of yellow, orange and red in fall.

<https://www.gardenia.net/plant/carpinus-caroliniana>

- ✓ Street Tree (no overhead wires), Parks: Leah Park, Pinewoods Park, Wurlitzer Park
- ✗ Street Tree (overhead wires)



***Catalpa speciosa* (Northern Catalpa)**

60' height x 30' spread

This tree produces white flowers that have bright yellow stamen and purple patterns on the inside of the flower. They flower in late spring to early summer. The foliage is noted to be very large and it produces long, showy, green seed pods that have a bean-like capsule. They do well in difficult to grow locations of the landscape, such as moist low spots or dry spots with poor soils tolerating wet, dry and alkaline soil conditions.

<https://www.missouribotanicalgarden.org/PlantFinder/PlantFinderDetails.aspx?kempercode=a856>

- ✓ Street Tree (no overhead wires) Parks: Gratwick, Leah, Pinewoods, Wurlitzer Park, Mayors, Sweeney Bike Path
- ✗ Street Tree (overhead wires)





***Celtis occidentalis* (Hackberry)**

60' Height x 40' Spread

Good street tree. Adapts to difficult urban conditions. This tree grows at a medium to fast rate, with height increases of anywhere from 13" to more than 24" per year. Requires at least 6 hours of full direct sunlight per day. Produces small, dark red drupes about 1/3" in diameter that turn dark purple as they mature in mid-autumn. These berry-like fruit persist into the winter. The fruit of the hackberry is popular with winter birds, especially the cedar waxwing, mockingbird and robin. The tree also attracts many butterfly species including American snout, hackberry, mourning cloak, and tawny emperor.

<https://www.gardenia.net/plant/celtis-occidentalis>

- ✓ Street Tree (no overhead wires), Parks: Gratwick Park, Leah Park, Wurlitzer, Sweeny Bike Path
- ✗ Street Tree (overhead wires)



***Cladrastis kentuckea* (Yellowwood)**

40' height x 35' spread

Superb specimen. White, pendulous, fragrant flowers in early summer (does not flower at young age). Smooth, gray, "beech-like" bark. Best suited for locations protected from strong winds.

<https://www.gardenia.net/plant/cladrastis-kentuckea>

- ✓ Street Tree (no overhead wires), Parks: Leah Park, Wurlitzer Park
- ✗ Street Tree (overhead wires)





### **Gymnocladus dioicus (Kentucky Coffee Tree)**

45' height x 35' spread

Good street tree with coarse picturesque texture in the winter. This tree bears leathery, reddish-brown seed pods. Tolerates all types of soil (including wet sites).

<https://mortonarb.org/plant-and-protect/trees-and-plants/kentucky-coffeetree/>

- ✔ Street Tree (no overhead wires), Parks: Leah Park, Pinewoods Park, Wurlitzer Park
- ✘ Street Tree (overhead wires)



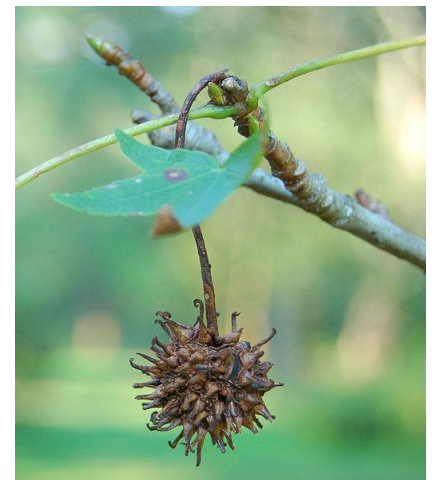
### **Liquidambar styraciflua 'Worplesdon' (Worplesdon Sweetgum)**

40' height x 25' spread

Cold hardy sweetgum with light, glossy-green leaves that turn orange to purple in the fall. Inconspicuous yellow-green flowers in spherical clusters are followed by clusters of hard, spherical bristly gum balls, remain on the tree through winter.

<https://www.gardenia.net/plant/liquidambar-styraciflua-worplesdon>

- ✔ Street Tree (no overhead wires) Parks: Gratwick Park, Leah Park, Wurlitzer Park
- ✘ Street Tree (overhead wires)





**Quercus acutissima (Sawtooth Oak)**

40' height x 40' spread

Foliage remains dark green and glossy all summer. Holds up well in high summer temperatures. Gray to black bark develops corky ridging with age.. Fruits are oval acorns (to 1" long), with spiny, scaly cups that extend to approximately 2/3 the acorn length. Acorn crops can be quite abundant and are an important source of food for wildlife. Fall color is variable, ranging from an attractive golden brown to undistinguished pale brown.

<https://www.missouribotanicalgarden.org/PlantFinder/PlantFinderDetails.aspx?taxonid=280732>

- ✔ Street Tree (no overhead wires) Parks: Gratwick, Leah, Wurlitzer
- ✘ Street Tree (overhead wires)



**Robinia pseudo 'Purple Robe' (Purple Robe Black Locust)**

45' height x 30' spread

Leaves are bronze-red in the spring and yellow in the fall. The tree produces very showy, hanging clusters of dark pink flowers in late spring. Fast growing. Drought and salt tolerant. Known to grow in most conditions.

<https://www.missouribotanicalgarden.org/PlantFinder/PlantFinderDetails.aspx?kempercode=c142>

- ✔ Street Tree (no overhead wires) Parks: Gratwick Park, Leah, Wurlitzer, Sweeney Bike Path
- ✘ Street Tree (overhead wires)





**Zelkova serrata 'Musashino' (Musashino Zelkova)**

45' height x 20' spread

Good urban street tree for restricted areas. Dark green foliage. Autumn brings an array of tones, from yellow to rusty red-orange. The tree's small leaf size greatly reduces the need for raking and other fall cleanup. Excels in tough urban conditions. Fast growing, needs full sunlight.

[http://plants.rutgersln.com/12150011/Plant/19027/Musashino\\_Zelkova/](http://plants.rutgersln.com/12150011/Plant/19027/Musashino_Zelkova/)

✔ Street Tree (no overhead wires) Parks: Gratwick, Leah, Wurlitzer

✘ Street Tree (overhead wires)



**Amelanchier grandiflora (Autumn Brilliance Serviceberry)**

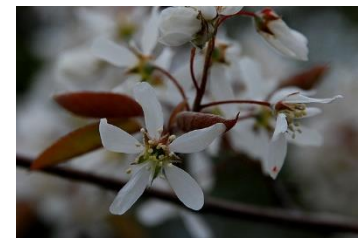
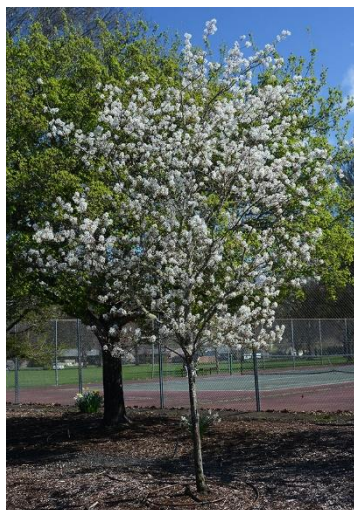
20' height x 15' spread

Good street or lawn tree. White flowers bloom in April followed by edible fruits (3/8" diameter) in June. Berries resemble blueberries in taste and may be used in jams, jellies and pies. Finely-toothed leaves emerge with bronze tints in spring, mature to dark green from late spring throughout summer before finally turning brilliant red to orange-red in fall.

<https://www.missouribotanicalgarden.org/PlantFinder/PlantFinderDetails.aspx?kempercode=b240>

✔ Street Tree (no overhead wires) Parks: Gratwick, Leah, Wurlitzer, Mayors Park

✔ Street Tree (overhead wires)





***Cornus mas* (Cornelian Cherry)**

20' height x 20' spread

Small tree with yellow flowers in early spring. Bright red fruit in summer. Easily grown in average, medium, well-drained soil in full sun to part shade. Prefers moist, organically rich soils.

<https://www.gardenia.net/plant/cornus-mas-cornelian-cherry>

- ✓ Street Tree (no overhead wires) Parks: Leah, Pinewoods, Wurlitzer Park
- ✓ Street Tree (overhead wires)



***Crataegus viridis* 'Winter King' (Winter King Hawthorn)**

20' height x 25' spread

Good street tree. Tolerates light, shade, drought and urban pollution. White flowers with attractive orange-red persistent fruit. Few twig thorns present. Fragrant, 5-petaled, white flowers in 2-inch clusters (corymbs) bloom in May. Flowers are followed by small red fruits (pomes) that ripen in September and usually persist on the tree well into winter. Bark on mature trunks exfoliates to reveal orange inner bark.

<https://www.gardenia.net/plant/crataegus-iridis-winter-king>

- ✓ Street Tree (no overhead wires) Parks: Leah, Wurlitzer Park
- ✓ Street Tree (overhead wires)





***Prunus sargentii* 'Spring Wonder' (Spring Wonder Sargent Cherry)**

25' Height x 22' Spread

Good street tree with pink flowers in spring. Foliage emerges with purplish color and matures to a dark shiny green during the summer and a red-orange color in fall. The bark is a shiny, reddish-brown color.

<http://www.thetreefarm.com/cherry-spring-wonder>

- ✓ Street Tree (no overhead wires) Parks: Leah, Pinewoods, Wurlitzer Park, Sweeny Bike Path
- ✓ Street Tree (overhead wires)



***Syringa reticulata* (Japanese Tree Lilac)**

25'x20'

White flowers in late spring and cherry-like bark. Good street tree. Easily grown in average, medium moisture, well-drained soil in full sun. Tolerates light shade, but best bloom occurs in full sun. Showy, fragrant, creamy white flowers bloom in upright panicles to 12" long in late spring to early summer (later than most other lilac species). Flowers give way to loose clusters of brown capsules that persist into winter. Reddish-brown peeling bark is attractive on younger branches, gradually turning gray with age. Sharply-tipped, lanceolate to ovate, dark green leaves (to 6" long). No fall color.

<https://www.gardenia.net/plant/syringa-reticulata>

- ✓ Street Tree (no overhead wires) Parks: Leah, Wurlitzer Park, Sweeney Bike Path
- ✓ Street Tree (overhead wires)



### **Populus tremuloides (Quaking Aspen)**

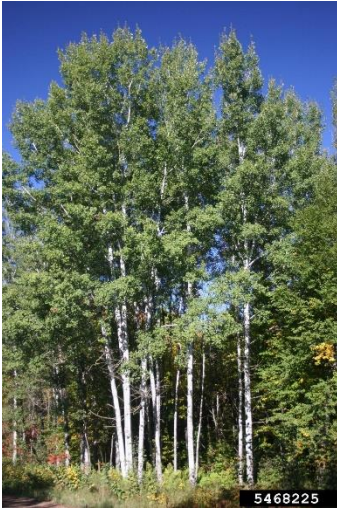
40' Height x 20' Spread

Native tree that tolerates a variety of soil types. Leaves flutter in slight breeze and turn an attractive yellow in the fall. Smooth, whitish-green bark becomes furrowed at the trunk's base with age. Silvery catkins appear before leaves. Female flowers give way to small drooping fruit clusters

<https://www.gardenia.net/plant/populus-tremuloides>

✗ Street Tree

✓ Parks: Gratwick, Leah, Mayors



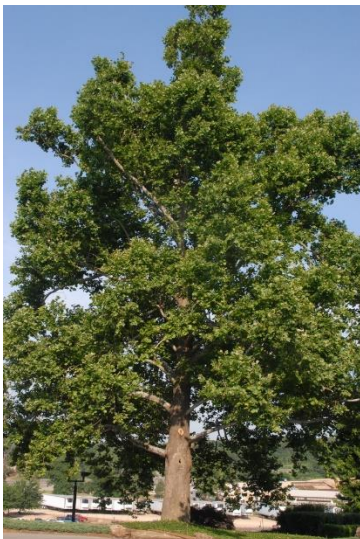
### **Platanus occidentalis (Sycamore)**

40' Height x 20' Spread

Generally regarded to be the most massive tree indigenous to eastern North America. Brown bark which exfoliates in irregular pieces to reveal creamy white inner bark. Mature trees typically display mottled white bark that facilitates identification from great distances. In fall, foliage typically turns an undistinguished yellow-brown. <https://plants.ces.ncsu.edu/plants/platanus-occidentalis/>

✗ Street Tree

✓ Parks: Gratwick, Leah, Mayors





***Abies concolor (White Fir)***

75' height x 25' spread

Evergreen that has a beautiful blue-white tint to its foliage. Hardy, and fast-growing. Branches when crushed emit a lemon scent.

✘ Street Tree

✔ Parks: Gratwick, Leah, Pinewoods



***Picea Abies (Norway Spruce)***

100' height x 40' spread

Evergreen that has pendulous branching giving grace to form. Fast growing, sensitive to high winds.

<https://mortonarb.org/plant-and-protect/trees-and-plants/norway-spruce/>

✘ Street Tree

✔ Parks: Leah, Pinewoods



***Picea glauca (White Spruce)***

75' height x 35' spread

Adapts well to a variety of site conditions, especially heat, cold, drought, and wind. Good for screening and windbreak purposes.

<https://mortonarb.org/plant-and-protect/trees-and-plants/white-spruce/>

✗ Street Tree

✓ Parks: Gratwick, Leah, Pinewoods



***Pinus Strobus (White Pine)***

100' height x 50' spread

The Eastern white pine is a tree for landscapes with ample space. Its fine feathery needles, open canopy, and straight trunk get more picturesque with age. Trees are fast-growing and long-lived This evergreen is sensitive to wind, salt and air pollutants.

<https://mortonarb.org/plant-and-protect/trees-and-plants/eastern-white-pine/>

✗ Street Tree

✓ Parks: Leah, Pinewoods





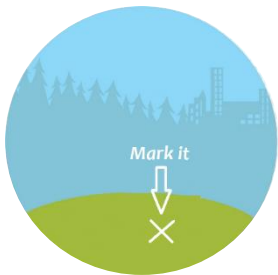
Order your tree online  
@ [www.ntparksrec.com](http://www.ntparksrec.com)

## ORDERING A STREET TREE

In late October we will call &  
confirm location with instructions



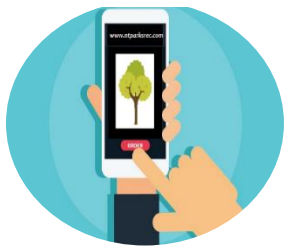
You mark the tree  
location.



We plant & stake the tree.



You water & care for it!



## ORDERING A PARK TREE (*PlaNT It Forward Program*)

You choose the pre-approved  
park/public space to plant



We plant & stake the tree.



We'll send you a picture of the location  
and a PlaNT it Forward tee-shirt



Questions?  
NT Parks & Recreation  
695-8520  
[ntparksrec@northtonawanda.org](mailto:ntparksrec@northtonawanda.org)

# Gratwick Riverside Park





# PINEWOODS PARK



# Wurlitzer Park





# Leah Park



**PlaNt it Forward**

I PLANTED A TREE IN NT!

# Mayors Park

